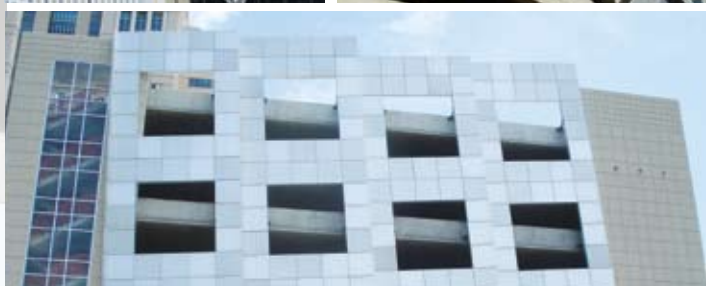


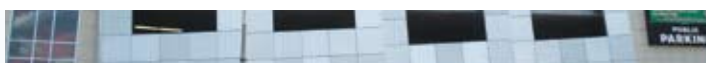
720 Olive Street - Suite 450
 St. Louis, MO 63101
 314.436.6500 (phone)
 314.436.1646 (fax)
 www.downtownstl.org

THE PARTNERSHIP for
 DOWNTOWN ST. LOUIS

DOWNTOWN COMMUNITY
 IMPROVEMENT DISTRICT



DOWNTOWN, ST. LOUIS



DOWNTOWN PARKING GUIDE

downtownstl.org



ON-STREET PARKING

- Downtown meters are enforced Monday through Friday, 8:00 am to 7:00 pm.
- Observe signs for additional restrictions.
- Free metered parking in downtown on Saturdays, Sundays and Holidays.

ON-STREET RATES

\$1.00 per Hour
25¢ per 15 Minutes

There are over 3,275 time-restricted curbside parking spaces available throughout the downtown area.

Please read the signs to confirm the meter time limit.

15 minute, 1 hour and 2 hour time limits are in effect at various locations.

To reserve a parking space, refer to the list of owners in this brochure.

For pricing on daily, monthly or special event parking or for more copies of this guide, contact 314.436.6500 ext. 240.



Index Of PARKING FACILITIES

Blue = Surface Parking

Red = Garage and In-Building Parking

Downtown Parking Contacts

| | |
|--------------------------|--------------|
| Central Parking (CP) | 314-421-4063 |
| CitiPark (Citi) | 314-241-1918 |
| City of St. Louis (City) | 314-622-4414 |
| InterPark (IP) | 314-421-2613 |
| S&H Parking (S&H) | 314-621-1600 |
| St. Louis Parking (SLP) | 314-241-7777 |
| Union Services (US) | 314-421-4370 |
| St. Louis RV Park | 314-241-3330 |

- 1 Levee Parking (SLP)
- 2 Arch Garage (Metro)
- 3 First & Lucas (SLP)
- 4 CitiPark Lot (Citi)
- 5 Riverfront Garage (SLP)
- 6 Laclede's Landing Lot (SLP)
- 7 C - Lot (SLP)
- 8 20th & Locust Lot (SLP)
- 9 909 North First
- 10 2nd & Carr (S&H)
- 11 1st & Carr (CP)
- 12 1st & Carr (SLP)
- 13 1st & Biddle (SLP)
- 14 627 South 6th Street (CP)
- 15 Second & Cass Lot (SLP)
- 16 Ninth Street Garage (SLP)
- 17 Broadway & Lucas (SLP)
- 18 MAC Garage (SLP)
- 19 Hampton Inn Lot (SLP)
- 20 Hampton Inn Garage (SLP)
- 21 MAC Lot (SLP)
- 22 500 Broadway Building (CP)
- 23 Mansion House (SLP)
- 24 QuikPark (Citi)
- 25 St. Louis Place (IP)
- 26 Bank of America Tower (SLP)
- 27 Hyatt Regency STL Riverfront
- 28 Stadium East (IP)
- 29 500 South Broadway (S&H)
- 30 15th & Lucas (S&H)
- 31 4th & Poplar (S&H)
- 32 Broadway & Cerre (SLP)
- 33 4th & Poplar (S&H)

- 34 4th & Cerre (S&H)
- 35 Broadway & Gratiot (S&H)
- 36 Broadway & Cerre (SLP)
- 37 Gratiot & 6th (S&H)
- 38 7th & Cerre (STL)
- 39 Amtrack Long-Term Parking (SLP) (Overnight Parking)
- 40 718 South 6th Street (USP)
- 41 Seventh Street Garage (SLP) Opening 2011
- 42 8th & Poplar (CP)
- 43 St. Patrick's Center Lots (SLP)
- 44 One Bell Center
- 45 1401 Delmar
- 46 One South Broadway (Hilton at the Ballpark)
- 47 City Museum
- 48 Gateway One Garage (SLP)
- 49 Kiener West Garage (IP)
- 50 Kiener East Garage (IP)
- 51 Metropolitan Square Building (CP)
- 52 6th & Olive (CP)
- 53 Macy's Central (CP)
- 54 Laclede Gas Building (CP)
- 55 7th & Pine Garage (City)
- 56 705 Park - 7th & Locust
- 57 Center Park Garage (Broadway & Locust) (SLP)
- 58 St. Louis Centre East (SLP)
- 59 US Bank Plaza Garage (SLP)
- 60 Drury Inn/CitiPark (Citi)
- 61 6th & Convention Lot (SLP)
- 62 America's Garage (SLP)
- 63 C-9 Garage (CP)
- 64 1800 Washington (S&H)
- 65 911 Garage (SLP)
- 66 12th & Cole Lot (SLP)
- 67 Post Dispatch Lots (STP)
- 68 4th & Cedar Lot (SLP)
- 69 427 South 15th (USP)
- 70 Tucker & Gay Streets (S&H)
- 71 The Globe Building
- 72 1010 Convention Plaza (SLP)
- 73 10th & Lucas
- 74 SLCCH Garage (SLP)
- 75 Williams Paper Co. Lot (City)
- 76 Justice Center Garage (City)
- 77 Tucker & St. Charles (SLP)
- 78 306 North Tucker (CP)

- 79 13th & Convention (S&H)
- 80 13th & Martin Luther King (CP)
- 81 10th & Pine Lot (SLP)
- 82 1400 Martin Luther King Drive (S&H)
- 83 11th & Pine Lot (SLP)
- 84 Stadium West (IP)
- 85 16th & Lucas
- 86 Municipal Garage (City)
- 87 11th & Clark Lot (SLP)
- 88 Cupples (Valentine Lot) (SLP)
- 89 City Block 426 (SLP)
- 90 Cupples Lot - 10th & Spruce (SLP)
- 91 Cupples Lot (Westin Hotel) (SLP)
- 92 Cupples Station Garage (City)
- 93 11th & Poplar (US)
- 94 St. Louis Sheraton City Ctr (CP)
- 95 13th & Spruce (CP)
- 96 1303 Spruce (USP)
- 97 Municiple Parking Plaza (City)
- 98 Ballpark Village (CP)
- 99 14th & Delmar (CP)
- 100 14th & Lucas (CP)
- 101 417 South 15th (USP)
- 102 14th & Locust (CP)
- 103 Kiel Center Garage (City)
- 104 16th & Clark (SLP)
- 105 Union Station - South Lot (SLP)
- 106 Drury Inn St. Louis Union Station (Citi)
- 107 Union Station - West Lot (SLP)
- 108 20th & Chestnut East Lot (SLP)
- 109 20th & Chestnut West Lot (SLP)
- 110 18th & Chestnut Garage (SLP)
- 111 Plaza Square Garage
- 112 15th & Pine (S&H)
- 113 Parkside Lot (SLP)
- 114 Parkside Garage (SLP)
- 115 7th & Cerre (SLP)
- 116 1215 Olive Lot (SLP)
- 117 16th & Olive (S&H)
- 118 1409 Washington (S&H)
- 119 1601 Locust Street (CP)
- 120 Chouteau's Landing (SLP)
- 121 6th & LaSalle Lot (SLP)
- 122 6th & Cole (STP)
- 123 7th & Chouteau



PUBLIC PARKING DOWNTOWN ST. LOUIS

To reserve a parking space, refer to the list of owners in this brochure.
For pricing on daily, monthly or special event parking, contact 314.436.6500 ext: 240.



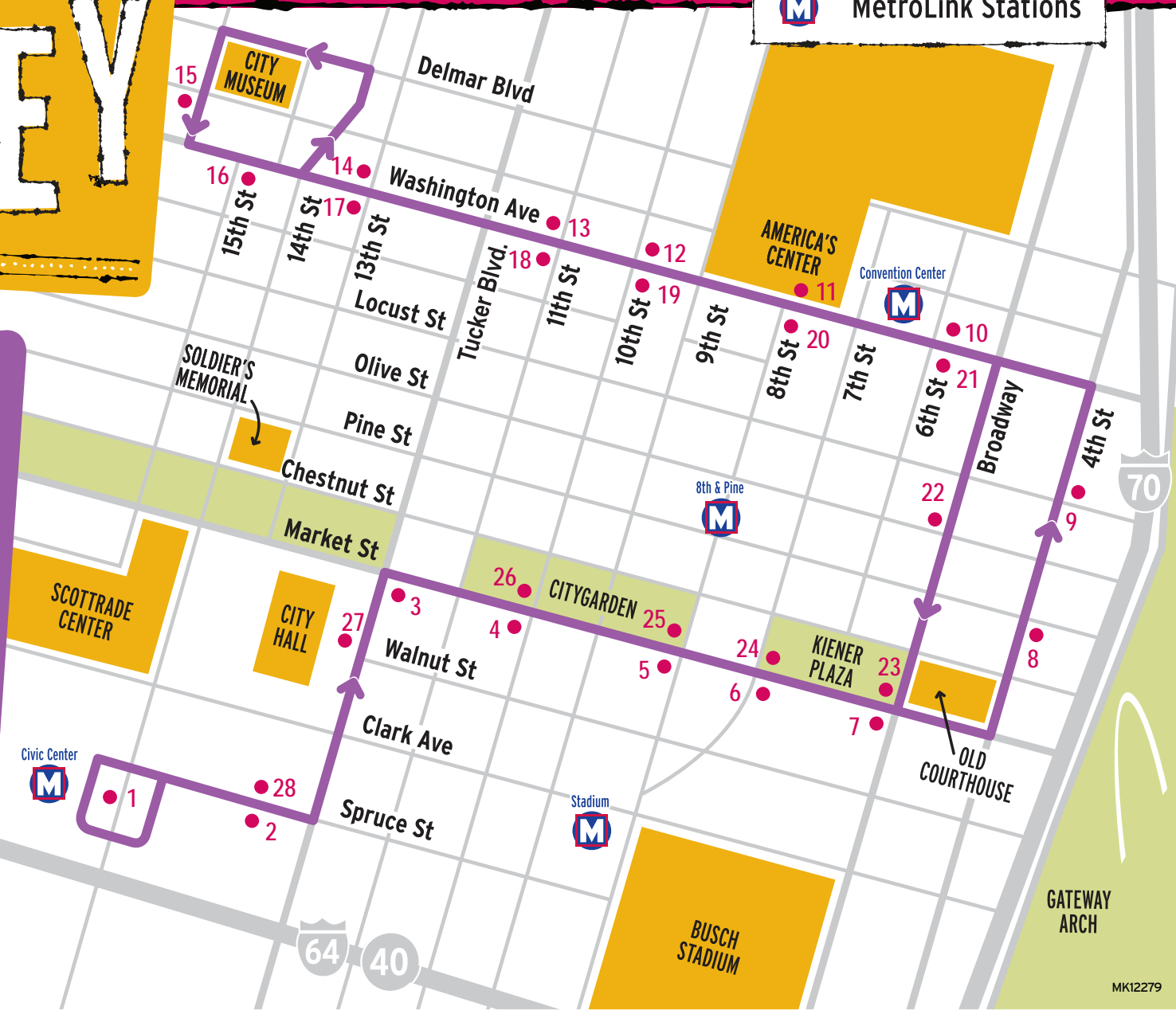
M METRO **P** PUBLIC PARKING

© 2010 Partnership for Downtown St. Louis.
This map may not be reproduced without the prior written permission of the Partnership for Downtown St. Louis.



DOWNTOWN TROLLEY

● Trolley Stops
 — Trolley Route
 MetroLink Stations

DOWNTOWN TROLLEY SCHEDULE

(Times begin from Civic Center MetroBus Center)

| | | |
|------------------|------------------|---------------|
| MON TO FRI | 5:10AM - 6 AM | EVERY 16 MIN. |
| | 6 AM - 6:15PM | EVERY 12 MIN. |
| SAT SUN | 6:15AM - 12:20AM | EVERY 16 MIN. |
| | 5:25AM - 12:05AM | EVERY 16 MIN. |
| | 10:45AM - 6PM | EVERY 16 MIN. |

TROLLEY ONE-DAY TICKET

\$2 Adults **\$1** Children, Seniors and Disabled

UNLIMITED USE ALL DAY

Tickets sold on the trolley or at the MetroRide Store at 7th and Washington

Visit metrostlouis.org or call (314) 231-2345 for more information



The trolley stops that are most convenient to the various downtown locations are indicated.

Civic Center Station

- 1 St. Louis Union Station/Visitors Center
- 1 St. Louis Union Station Marriott,
- 1 Landry's Restaurant
- 1 Hard Rock Café
- 1 Drury Inn Union Station
- 1 Peabody Opera House
- 1 St. Louis Blues Hockey Club
- 1 Scottrade Center
- 1 Sheraton St. Louis City Center Hotel & Suites
- 1 Amtrak Station
- 1 Maggie O'Brien's Restaurant
- 1 Lombardo's Trattoria

Tucker & Market/Chestnut

- 3 Soldiers Memorial
- 27 City Hall

Market & 10th streets

- 26 Citygarden
- 26 Omni Majestic Hotel
- 4 Joe Buck's Restaurant
- 25, 26 Joe's Chili Bowl

Market & 8th streets

- 25 Citygarden

Market & 7th streets

- 6 Mike Shannon's Steaks & Seafood
- 24 Gio's Ristorante & Bar
- 24 Hooters

Market & 7th streets (cont.)

- 24 Hunan Manor Chinese Restaurant
- 24 Patty Long Catering at Point of View

Market & Broadway

- 7 Hilton St. Louis at the Ballpark
- 7 Tony's
- 23 Old Courthouse
- 6,7 Busch Stadium
- 7 Carmine's Steakhouse,
- 6, 7 St. Louis Cardinals
- 6, 7 Official Cardinals Team Store
- 2, 28 Westin St. Louis,
- 7, 23 Basilica St. Louis King (Old Cathedral)
- 23 Caleco's Bar & Grill
- 23 TGI Friday's
- 23 Hardee's/Red Burrito
- 6,7,
- 23, 24 Kiener Plaza/Visitors Center
- 7, 23 Gateway Arch at the Core of Discovery,
- 7, 23 Gateway Arch Riverboats at the Core of Discovery
- 7, 23 Gateway Helicopter Tours

Pine & 4th streets

- 8 Hyatt Regency St. Louis at The Arch
- 7 Drury Plaza Hotel
- 7 Millennium Hotel St. Louis
- 8 Crowne Plaza St. Louis Downtown
- 8 Hilton St. Louis Downtown
- 8 Ruth's Chris Steakhouse
- 22 Top of the Met/Kemoll's

Locust & 4th streets

- 9 Mansion House
- 9 The Gentry's Landing
- 9 Hampton Inn Gateway Arch
- 9 Tigin Irish Pub

Convention Center & Washington Ave.

- 10 Missouri Athletic Club
- 10 Drury Inn and Suites St. Louis Convention Center

Convention Center & Washington Ave. (cont.)

- 10 Art Saint Louis
- 22 Macy's
- 10 Embassy Suites St. Louis Downtown,
- 10 The MX
- 21 Niche

Arch-Laclede's Landing Station

- 10 Al's Restaurant
- 10 Lumiere Place Hotels and Casino
- 10 Hotel Lumiere
- 10 Four Seasons Hotel St. Louis
- 10 Big Daddy's on the Landing
- 10 Sundecker's Bar & Grill
- 10 Morgan Street Brewery
- 10 The Drunken Fish
- 10 The Big Bang
- 10 Hannegan's Restaurant & Pub
- 10 The Old Spaghetti Factory
- 10 Show Me's on The Landing
- 10 Delta Dental Health Theatre

Washington Ave. & 8th street

- 11, 20 America's Center/Visitors Center
- 11, 20 Edward Jones Dome
- 11, 20 St. Louis Rams
- 11, 20 St. Louis Executive Conference Center
- 11, 20 Renaissance
- 11, 20 St. Louis Grand Hotel
- 11, 20 The Roberts Mayfair Hotel
- 11, 20 UPS Store inside the Renaissance Grand St. Louis
- 19 The Over/Under Bar and Grill
- 19 Ceci
- 12 Ramada Plaza St. Louis Convention Center
- 20 Café Cioccolato
- 19 Culinaria, a Schnucks Market

Washington & 10th streets

- 12, 19 Mosaic Modern Fusion Restaurant & Lounge
- 12, 19 Mizu Sushi Bar

Washington & 10th streets (cont.)

- 13 Mango Peruvian Restaurant
- 13 The Dubliner Irish Pub & Bistro
- 19 Park Avenue Coffee
- 19 Prime 1000

Washington & 11th streets

- 13 McMurphy's Grill
- 18 Crack Fox
- 13 Flamingo Bowl
- 18 Copia Restaurant & Wine Garden
- 14,17 Jive & Wail Dueling Pianos
- 19 Charles P. Stanley Cigar Company & Lounge
- 18 Papa John's Pizza

Washington & 13th streets

- 14, 17 Boxers
- 14, 17 Beverly's Hill
- 17 Lucas Park Grille
- 17 Sen Thai-Asian Bistro
- 14, 17 St. Louis Public Library (Central location)
- 14, 17 Flannery's Pub
- 17 Rosalita's Cantina

Washington & 15th streets

- 16 Campbell House Museum
- 15 City Museum
- 15 World Aquarium at City Museum
- 15 Everydaycircus

Olive & Broadway

- 22 Pickles Deli
- 22 Christian Science Reading Room
- 22 Kemoll's/Top of the Met
- 22 Jimmy John's Sandwich Shop
- 22 St. Louis Bread Co.
- 22 The Edible Difference
- 22 Charlie Gitto's Pasta House



Metro

Transportation

MetroLink

St. Louis' light rail system, MetroLink, has been called one of the best mass transit systems in the country. The clean, efficient trains are a big hit with visitors and locals alike who want to see many of St. Louis' attractions without a car. The system – which begins at Lambert-St. Louis International Airport and covers 48 miles – ends in suburban Belleville, Illinois at Scott Air Force Base/Shiloh and stops at 37 Missouri and Illinois stations in between.

MetroLink's trains pull into stations near many of St. Louis' visitor attractions. These stations, listed in bold, are near the following attractions: Clayton – Shaw Park, dining, hotels, shopping; Skinker – Washington University, Edison Theatre, Mildred Lane Kemper Museum of Art; **UM St. Louis North** – University of Missouri St. Louis, Blanche M. Touhill Performing Arts Center, Mercantile Library; Delmar/Loop – St. Louis Walk of Fame, The Loop neighborhood; Forest Park – Zoo, Art Museum, History Museum, Science Center; **Central West End** – Central West End neighborhood, restaurants, Cathedral Basilica of Saint Louis; **Grand** – Saint Louis University, Cupples House, Museum of Contemporary Religious Art, Grand Center entertainment district theaters, Pulitzer Foundation for the Arts, Contemporary Art Museum; **Union Station** – Union Station festival marketplace, restaurants, entertainment, hotels; **Civic Center** – Scottrade Center arena, City Hall, hotels; **Stadium** – Busch Stadium, hotels; **8th & Pine** – Central downtown, restaurants, Kiener Plaza, Old

Courthouse, hotels; Convention Center – America's Center® convention complex, Edward Jones Dome, hotels; Arch/Laclede's Landing – Lumière Place, historic district, entertainment President Casino, restaurants, Gateway Arch, riverboat cruises, hotels.

A one-way ride on MetroLink costs \$2.25. Tickets may be purchased and validated at each station. Tickets from the airport station to downtown St. Louis cost \$4.00. Day Passes for MetroLink and MetroBus are \$7.50. Trains run every seven minutes during rush hours, every 10 minutes during non-rush hours and every 15 minutes in the evening during the week. For schedule information, dial (314) 231-2345. TTY: (314) 982-1555.

MetroBus Shuttles

Getting around town is a snap. To provide increased access for conventioners and tourists to more of St. Louis' attractions, Metro has developed a single route (#93 Mid Town South County) that now serves primary downtown hotels and connects many significant tourist venues including Soulard, the Anheuser-Busch Brewery, City Museum, the Hill, the Missouri Botanical Garden, Euclid Avenue and the Central West End, Cathedral Basilica of St. Louis, and Grand Center. And year-round, the #90 Hampton MetroBus route continues to serve many of the attractions in Forest Park. Adult one-ride MetroBus fare begins at \$2.00. Please consult www.metrostlouis.org for routes and schedule information.

MetroBus

The Bi-State system serves most areas of St. Louis and St. Louis County. Call the Transit Information Center (314) 231-2345, Monday through Friday, or visit the MetroRide store in the Visitor Information Center at Seventh Street and Washington Avenue in downtown St. Louis from 8:30 a.m.-5 p.m. Buses generally run from 4 a.m. until 2 a.m. The fare is \$2.00. Greyhound Bus Lines, (314) 231-4485 or (800) 231-2222, operates service to and from the Gateway Transportation Center located on South 15th Street.

Downtown Trolley

There is a new, more economical way to get around downtown St. Louis these days, thanks to the new Downtown Trolley. Colorful Metro buses that have been painted to look like trolleys now travel a circuit that links riders to many of downtown's most popular destinations, including St. Louis Union Station, Busch Stadium, the America's Center convention complex, City Museum, and dozens of restaurants and hotels. An all day pass in only \$2 and can be purchased in the MetroRide Store located at Seventh Street and Washington Avenue. Visit www.metrostlouis.org for details.

St. Louis by Car

An easy-to-use network of interstate highways runs through St. Louis making it a short drive to attractions. From the east, I-70, I-64 and I-55 head west across the Poplar Street Bridge and into downtown St. Louis. I-70 runs through downtown, past the airport and west through Missouri. I-55 turns south past the Anheuser-Busch brewery and continues through southeastern Missouri. I-64, which the locals call Highway 40, continues west through St. Louis, past Forest Park and to the Missouri River. I-44 begins in St. Louis and runs southwest along the former path of Route 66 to Springfield, Missouri.

Taxis & Limousines

Taxi companies maintain stands at the America's Center convention complex, at the airport and major hotels throughout St. Louis. Taxi drivers are uniformed and their vehicles must meet strict standards enforced by the St. Louis Metropolitan Taxicab Commission. Eleven limo services, offering everything from town cars to super-stretch vehicles, also operate in St. Louis.

Trains

Amtrak provides daily rail service to St. Louis. Stations are located in the St. Louis suburb of Kirkwood and downtown at the new Gateway Transportation Center located on South 15th Street.